

RENZMANN

Washing machine for parts 3400

Cleaning with solvent or
aqueous media



EXCELLENT CLEANING



- ▶ Clean parts = less downtime

EASY HANDLING



- ▶ Short and reliable washing cycles

HIGH-QUALITY



- ▶ High-end components and sturdy construction

TECHNICAL DATA

Sizes available: 15, 20, 25 and 30

Washing pump capacity m³/h: 50-100

Inner exhaust m³/h: 2200 or 3000

Dimensions (smallest) in mm, L x B x H: 3450 x 2300 x 2600

Dimensions (biggest) in mm, L x B x H: 4850 x 2300 x 2600

Technical changes reserved



Sustainability First!
Combine washing and distilling



Why a 3400?



EFFICIENT CLEANING:

Oscillating spray bars with optimized nozzle arrangement and short spraying distance.



EASY HANDLING:

Frontloader for easy (un)loading and cleanliness around the machine.



SAFE USE:

Explosion protection according to ATEX, category 1 (with type examination) for zone 0 inside, category 2 for zone 1 outside the machine.

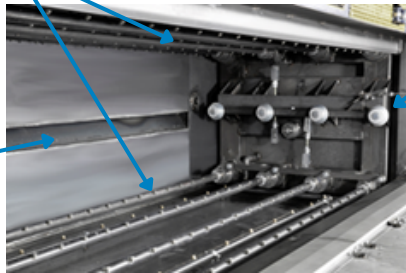


ROBUST DESIGN:

High-quality components like pumps and ventilators. Long life cycle with regular maintenance.

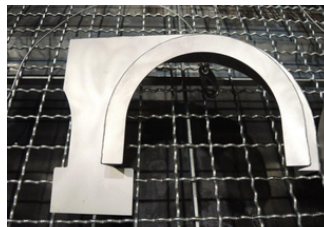
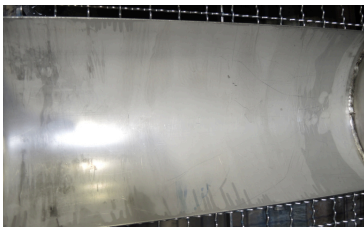
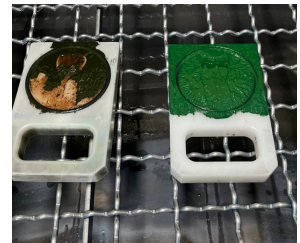
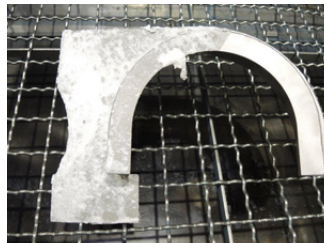
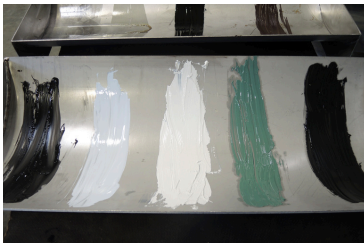
Oscillating spray bars

Large slot for suction=
reduction of emissions



Rollers for convenient loading and unloading

Before/ After



Partner with our **multidisciplinary experts** for **tailored advice** and **worldwide customer care!**

Cleaning and Distillation Trials
technikum@dw-renzmann.de

Consultation and Sales
sales@dw-renzmann.de

Service and Maintenance
service@dw-renzmann.de