

RENZMANN

Washing machine for mixing vessels

ROBUS

Cleaning with solvent or
aqueous media



For vessels with outlet

EXCELLENT CLEANING



▶ Clean containers = less downtime

EASY HANDLING



▶ Short and reliable washing cycles

HIGH-QUALITY



▶ High-end components and sturdy construction

TECHNICAL DATA

Container Ø inside/outside max. [mm]
Container height inside [mm]
Rim height above floor [mm]
Dimensions W x D x H [mm]

Size 1

1200 / 1250
500 – 1300
700 – 1500
2500 x 4250 x 2020

Size 2

1600 / 1650
500 – 1500
700 – 1700
2800 x 4650 x 2310

Size 3

2000/ 2050
500-1700
700 - 1900
3350 x 6150 x 2650

Technical changes reserved



Sustainability First!
Combine washing and
distilling



Why ROBUS?



EFFICIENT CLEANING:

Efficient internal cleaning of round containers with centrifugal brush.
Washing with recirculating washing solvent and rinsing with clean solvent.



EASY HANDLING:

Automatic washing program.



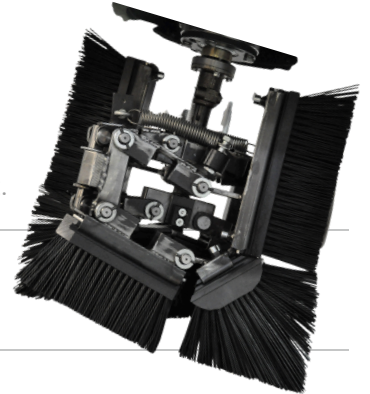
SAFE USE:

Explosion protection according to ATEX, category 1 (with type examination) for zone 0 inside, category 2 for zone 1 outside the machine.

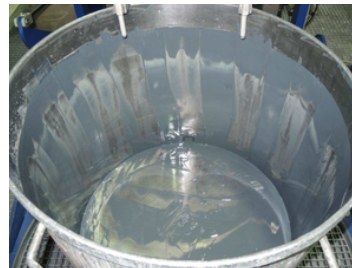


ROBUST DESIGN:

High-quality components like pumps and ventilators. Long life cycle with regular maintenance.



Before/ After



Partner with our **multidisciplinary experts** for **tailored advice** and **worldwide customer care!**

Cleaning and Distillation Trials
technikum@dw-renzmann.de

Consultation and Sales
sales@dw-renzmann.de

Service and Maintenance
service@dw-renzmann.de