

# RENZMANN

## Washing machine for mixing vessels SKM

Cleaning with solvent or  
aqueous media



For vessels with/without outlet

### EXCELLENT CLEANING



► Clean containers = less downtime

### EASY HANDLING



► Short and reliable washing cycles

### HIGH-QUALITY



► High-end components and sturdy construction

#### TECHNICAL DATA

	SIZE 9/11	SIZE 12/13	SIZE 15/15	SIZE 17/17
Container Ø x height [mm]	900 x 1100	1200 x 1300	1500 x 1500	1700 x 1700
Washing pump capacity [m³/h]	50	70	90	90
Internal air extraction system [m³/h]	2200	3000	4000	4000
Max. weight of vessel [kg]	250	400	600	750
Dimensions W x D x H [mm]	1800 x 5150 x 2550	2200 x 6050 x 3050	2500 x 6550 x 3320	2750 x 7000 x 3650

Technical changes reserved



**Sustainability First!**  
Combine washing and  
distilling



## Why an SKM?



### **EFFICIENT CLEANING:**

Efficient internal and external cleaning of containers with oscillating spray register and spray pipes rotating around the outside of the container. Rinsing with clean solvent.



### **EASY HANDLING:**

Automatic washing program.



### **SAFE USE:**

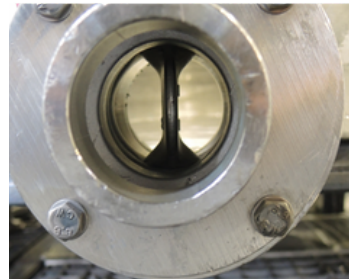
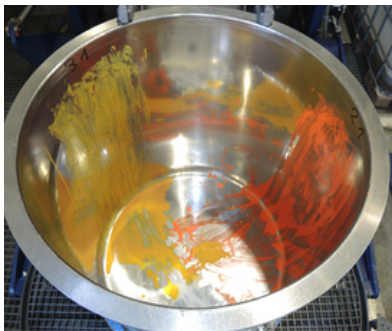
Explosion protection according to ATEX, category 1 (with type examination) for zone 0 inside, category 2 for zone 1 outside of machine.



### **ROBUST DESIGN**

High-quality components like pumps and ventilators. Long life cycle with regular maintenance.

## Before/ After



Contact our **multidisciplinary experts** for **tailored advice** and **worldwide customer care!**

Washing/Distillation Trials  
[technikum@dw-renzmann.de](mailto:technikum@dw-renzmann.de)

Consultation  
[vertrieb@dw-renzmann.de](mailto:vertrieb@dw-renzmann.de)

Service and Maintenance  
[service@dw-renzmann.de](mailto:service@dw-renzmann.de)