

RENZMANN

Washing machine for mixing vessels

SKM

Cleaning with solvent or
aqueous media



For vessels with/without outlet

EFFICIENT CLEANING



▶ Clean containers = less downtime

EASY HANDLING



▶ Short and reliable washing cycles

HIGH-QUALITY



▶ High-end components and sturdy
construction

TECHNICAL DATA

Container \varnothing x height [mm]

SIZE 9/11

900 x 1100

SIZE 12/13

1200 x 1300

SIZE 15/15

1500 x 1500

SIZE 17/17

1700 x 1700

Washing pump capacity [m^3/h]

50

70

90

90

Inner exhaust [m^3/h]

2200

3000

4000

4000

Max. weight of vessel [kg]

250

400

600

750

Dimensions W x D x H [mm]

1800 x 5150 x 2550

2200 x 6050 x 3050

2500 x 6550 x 3320

2750 x 7000 x 3650

Technical changes reserved



Sustainability First!
Combine washing and
distilling



Why an SKM?



EFFICIENT CLEANING:

Efficient internal and external cleaning of containers with oscillating spray register and spray pipes rotating around the outside of the container. Rinsing with clean solvent.



EASY HANDLING:

Automatic washing program.



SAFE USE:

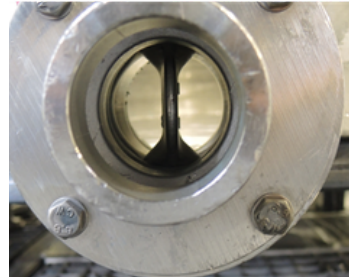
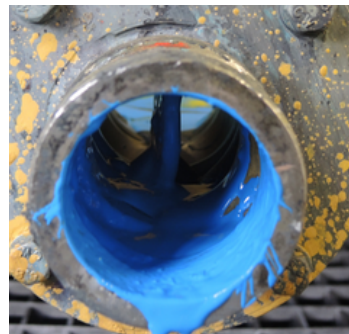
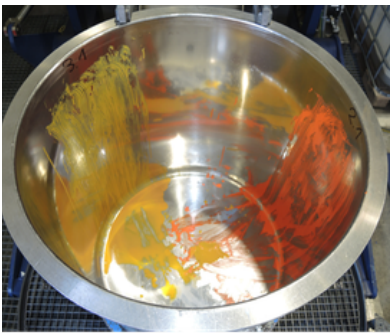
Explosion protection according to ATEX, category 1 (with type examination) for zone 0 inside, category 2 for zone 1 outside of machine.



ROBUST DESIGN

High-quality components like pumps and ventilators. Long life cycle with regular maintenance.

Before/ After



Contact our **multidisciplinary experts** for **tailored advice** and **worldwide customer care!**

Cleaning and Distillation Trials
technikum@dw-renzmann.de

Consultation and Sales
sales@dw-renzmann.de

Service and Maintenance
service@dw-renzmann.de